

# BNC Isolated Receptacle(PCB Mounting)

## BNC-RD Series

Conforming  
Standard

MIL-PRF-39012

Lock Type

BNC

Characteristic  
Impedance

Unmatched

Mounting  
Type

DIP

### FEATURE

- BNC-RD series is an isolated BNC receptacle connector for PCB mounting.
- The outer conductor and PCB are isolated by PBT resin housing.
- The ground contact is installed along the outer conductor and united with insulator adjacent to the contact.
- The tuning fork contact design for low cost.
- Horizontal and vertical mounting styles are available.
- The horizontal mounting height is 14.0mm from PCB surface.
- Varieties of applications such as, computer, communication and medical equipment.



### SPECIFICATIONS

Characteristic Impedance	Unmatched
Rated Voltage	500VAC(r.m.s.)
Dielectric Withstanding Voltage	1500V AC(r.m.s.) / 1 minute
Insulation Resistance	5000M $\Omega$ (min.) at 500V DC
Operating Temperature	-55 ~ +85°C

### MATERIAL / FINISH

Item	Material / Finish
Housing	PBT(UL94V-0)
Outer Conductor	Zinc Alloy / Ni Plating
Contact(Socket)	Copper Alloy
Insulator	PBT (UL94V-0)

**RoHS**  
Compliant

BNC- ☐ ☐ RD- ☐ ☐ ☐ -FA

L : Right Angle  
S : Straight

F : with Flange  
N : without Flange

R : Receptacle

Deviation

FA: Lead Free

Contact Plating  
A : Ag Plating  
B : Au Plating

Panel Mounting Hex Nut, Lock Washer  
A : with Hex Nut, Lock Washer  
N : without Hex Nut, Lock Washer

P : Board Lock  
S : Thread (Attached)

Housing Color  
B : Black  
W : White

Connector Style	Flange	Board Lock Type	Thread Type
Straight Style	with Flange	○	○
Right Angle Style	Less Flange	○	x
	with Flange	○	○

○ : available  
x : not available

※ BNC-SFRD- ☐ P ☐ ☐ -FA: Straight Style, Board Lock Type

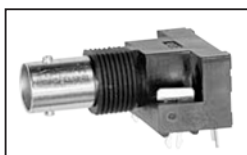
※ BNC-LFRD- ☐ S ☐ ☐ -FA: Right Angle Style, Thread Type

Panel Mounting Fitting	PCB Mounting Fitting
<p>Lock Washer Hex Nut</p> <p>*Option</p>	<p>Pan-head Screw Hex Nut</p> <p>*Attached</p>

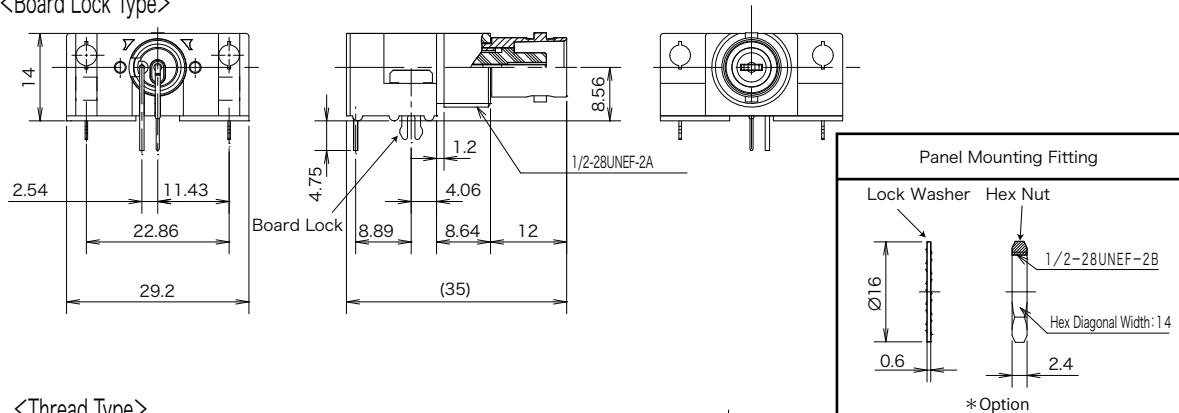
© Specifications and/or dimensions in this catalogue are subject to change without notice.

Your catalogue checking the latest specifications with our drawings would be highly appreciated.

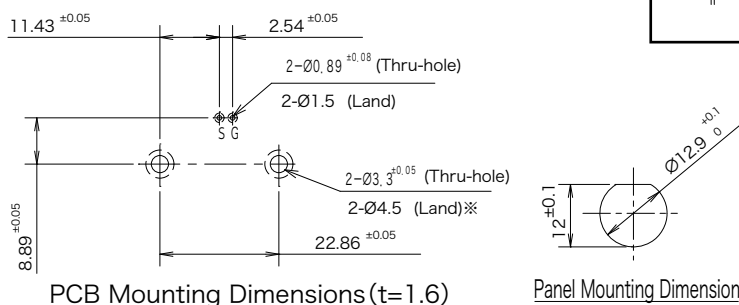
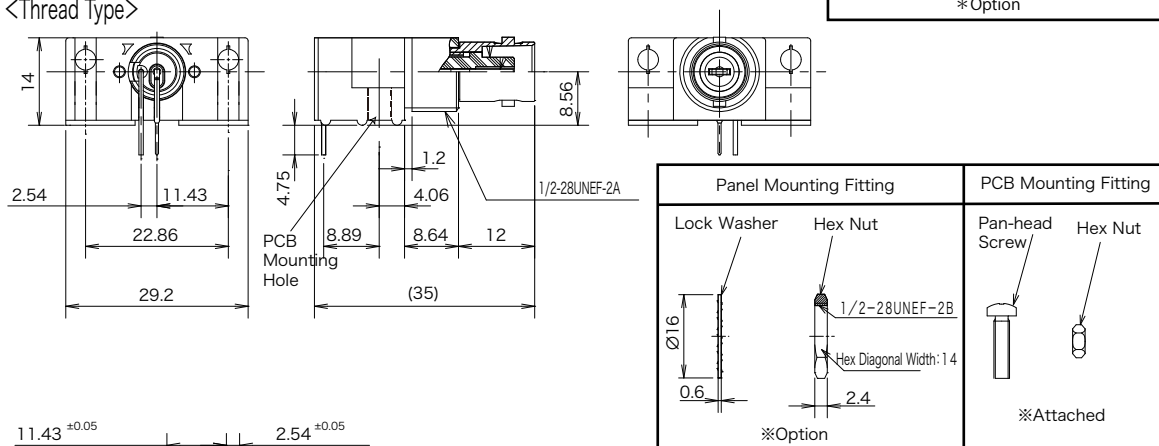
# ▶Horizontal Mounting Style (with Flange)



&lt;Board Lock Type&gt;



&lt;Thread Type&gt;



Note ※ Board lock style requires  $\phi 4.5$  land.

※ Board lock pins also requires soldering when mounting.

BNC-LFRD-□□□□-FA

Housing Color  
B : Black  
W : White

Contact Plating  
A : Ag Plating  
B : Au Plating

Panel Mounting Hex Nut, Lock Washer  
A : with Hex Nut, Lock Washer  
N : without Hex Nut, Lock Washer

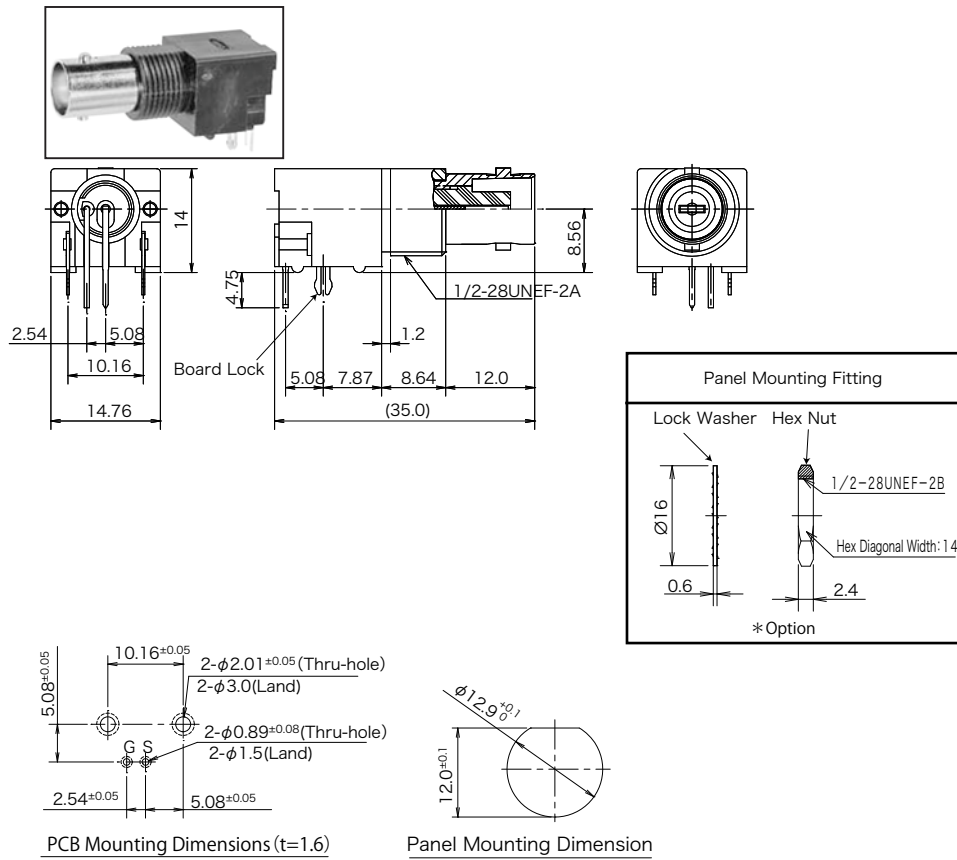
P : Board Lock  
S : Thread (Attached)

© Specifications and/or dimensions in this catalogue are subject to change without notice.

Your catalogue checking the latest specifications with our drawings would be highly appreciated.

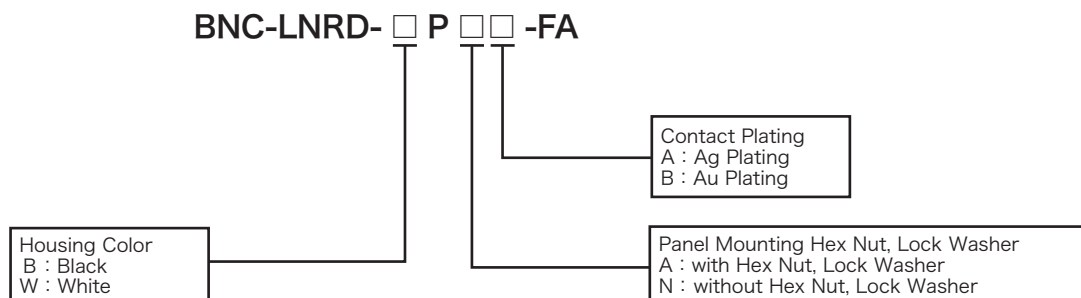
<https://www.connector.fujikura.com>

# ▶ Horizontal Mounting Style (without Flange)



※ Board lock style is only available.

※ Board lock pins also requires soldering when mounting.

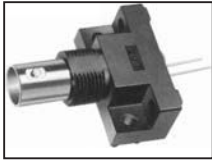


© Specifications and/or dimensions in this catalogue are subject to change without notice.

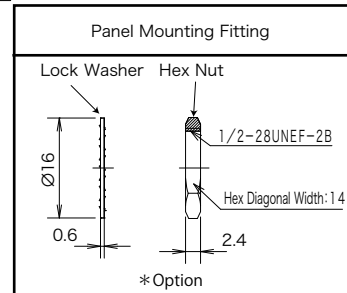
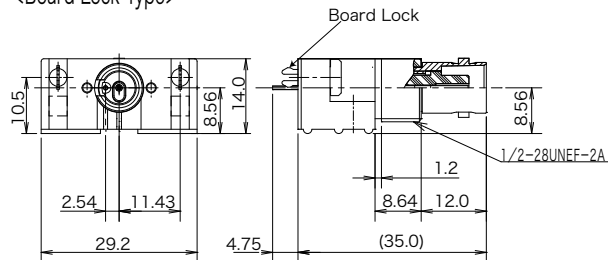
Your catalogue checking the latest specifications with our drawings would be highly appreciated.

<https://www.connector.fujikura.com>

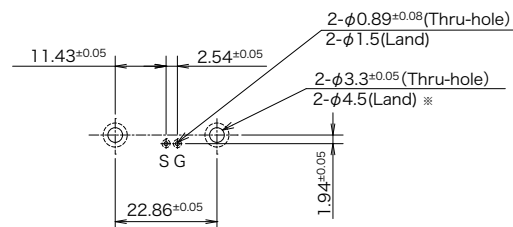
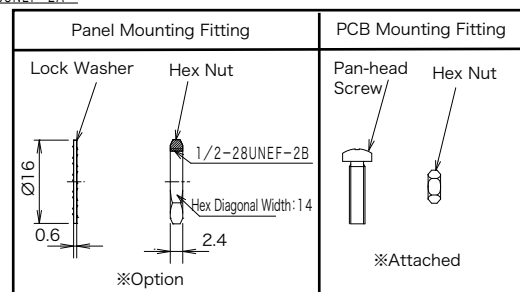
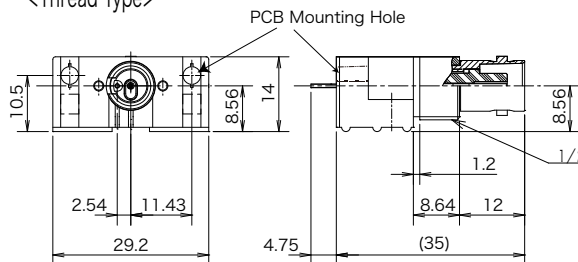
# ▶ Vertical Mounting Style (with Flange)



<Board Lock Type>



<Thread Type>



PCB Mounting Dimensions (t = 1.6)

Panel Mounting Dimension

Note ※ Board lock style requires  $\phi$  4.5 land.

※ Board lock pins also requires soldering when mounting.

BNC-SFRD-□□□□-FA

Housing Color  
B : Black  
W : White

Contact Plating  
A : Ag Plating  
B : Au Plating

Panel Mounting Hex Nut, Lock Washer  
A : with Hex Nut, Lock Washer  
N : without Hex Nut, Lock Washer

P : Board Lock  
S : Thread (Attached)

© Specifications and/or dimensions in this catalogue are subject to change without notice.

Your catalogue checking the latest specifications with our drawings would be highly appreciated.

<https://www.connector.fujikura.com>