

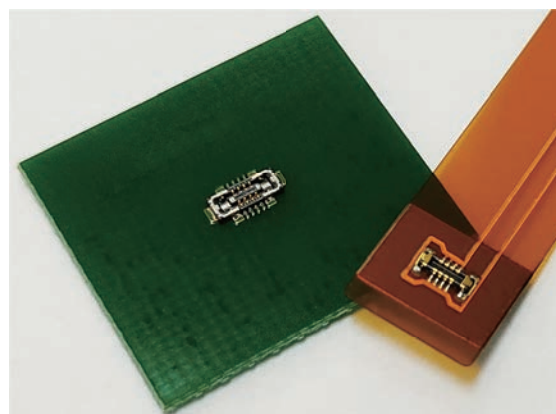
0.35mm pitch Board to Board(FPC) Connector

FB35AT5 Series



OUTLINE

FB35AT5 is a 0.35mm pitch board to board(FPC) connector with a stacking height of 0.5mm. Space-saving design with a depth of 1.65mm.



FEATURE

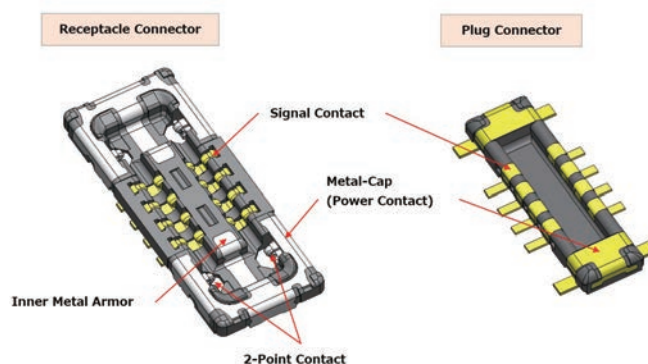
- Pitch 0.35mm, Width 1.65mm, Stacking height 0.5mm
- Number of Contact : 8
- Metal-cap structure prevents from the damage by mis-alignment mating.
- Inner metal armor structure further increases strength
- The power contacts serve with up to 3A current available, which allows for more efficient use of the available connection contacts.
- High reliability with two point contact structure.
- Good click feel when connector is mated.

APPLICATIONS

Smartphone, Smartwatch, other compact portable devices

SPECIFICATIONS

Rated Voltage	30V AC(r.m.s.) / 30V DC
Rated Current	0.4A Signal Contact 3.0A Power Contact
Insulation Resistance	100 MΩ min. at 200V DC
Dielectric Withstand Voltage	AC 200 V (r.m.s.) / 1 minute
Contact Resistance	30 mΩ max. Signal Contact 20 mΩ max. Power Contact
Operating Temperature	-40°C ~ +85°C



MATERIAL / FINISH



Item	Material / Finish
Signal Contact	Copper Alloy / Au over Ni Plating
Housing	LCP Resin (UL94V-0) / Black
Power Contact	Copper Alloy / Au over Ni Plating

© Specifications and/or dimensions in this catalogue are subject to change without notice.
Your catalogue checking the latest specifications with our drawings would be highly appreciated.

0.35mm pitch Board to Board(FPC) Connector

Plug Connector

FB35AT 5 - PAXX-3A

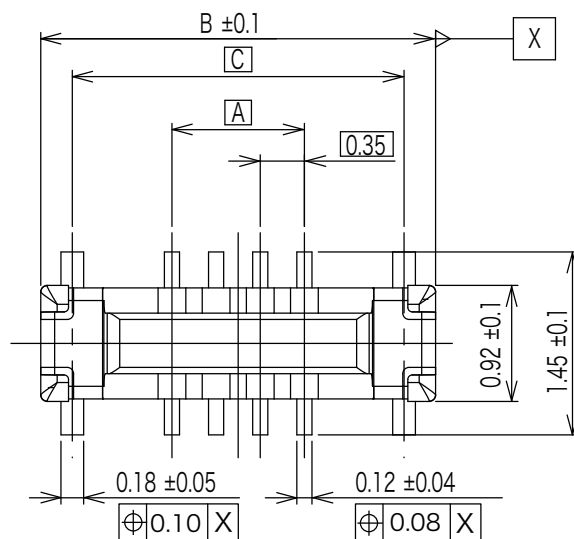
Series Name
FB35AT : 0.35mm pitch, 1.65mm
depth Board to Board
Connector

Mating Height
5 : 0.5mm height

Contact Plating
3 : Au(Flash) over Ni plating

Number of Contact
See Table-1

Mating Style
P : Plug



GENERAL TOLERANCE	
X < 5	±0.15
5 ≤ X < 15	±0.25
15 ≤ X	±0.40
ANGLE	±3°

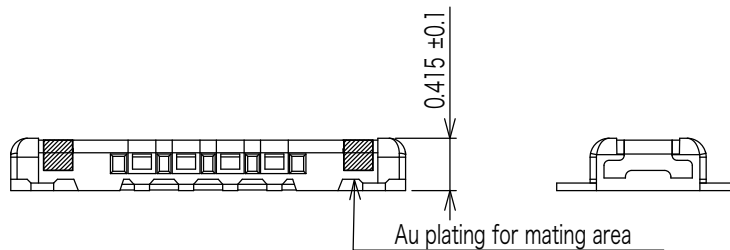


Table-1

Part Number	Number of Contact	A	B	C
FB35AT5-PA8-3A	8	1.05	3.13	2.63

▶ 0.35mm pitch Board to Board(FPC) Connector

Receptacle Connector

FB35AT 5 - RAXX-3A

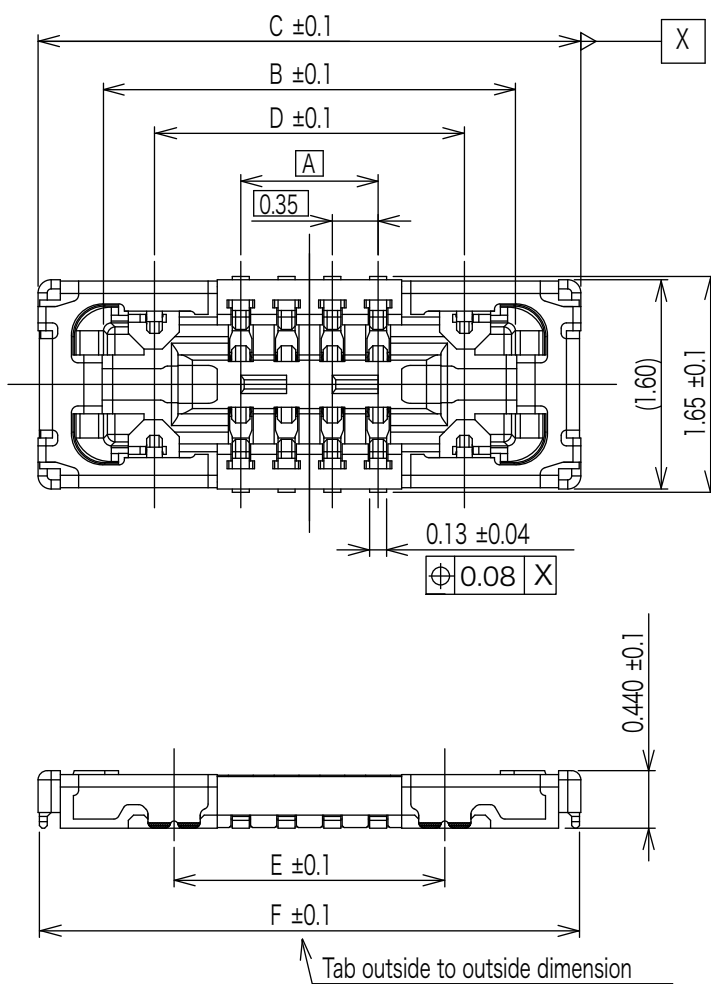
Series Name
FB35AT : 0.35mm pitch, 1.65mm
depth Board to Board
Connector

Mating Height
5 : 0.5mm height

Contact Plating
3 : Au(Flash) over Ni plating

Number of Contact
See Table-2

Mating Style
R : Receptacle



GENERAL TOLERANCE	
X < 5	±0.15
5 ≤ X < 15	±0.25
15 ≤ X	±0.40
ANGLE	±3°

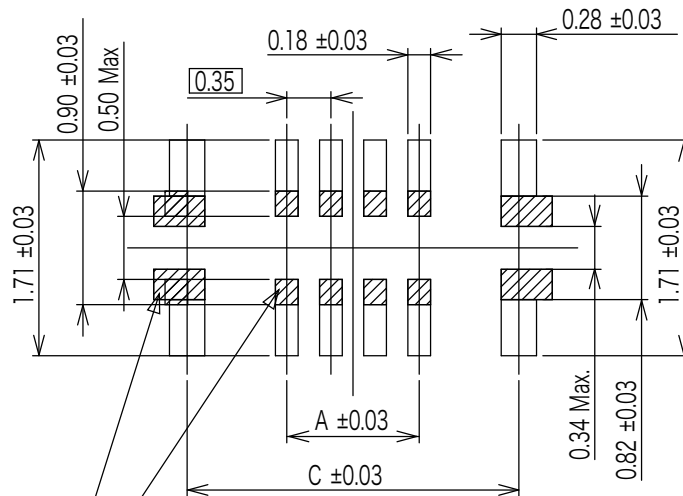
Table-2

Part Number	Number of Contact	A	B	C	D	E	F	G
FB35AT5-RA8-3A	8	1.05	3.15	4.15	2.37	2.07	4.13	4.37

▶ 0.35mm pitch Board to Board(FPC) Connector

Recommended P.C.B. Layout

Plug Connector



推奨基板寸法

Table-1

Part Number	Number of Contact	A	B	C
FB35AT5-PA8-3A	8	1.05	3.13	2.63

Receptacle Connector

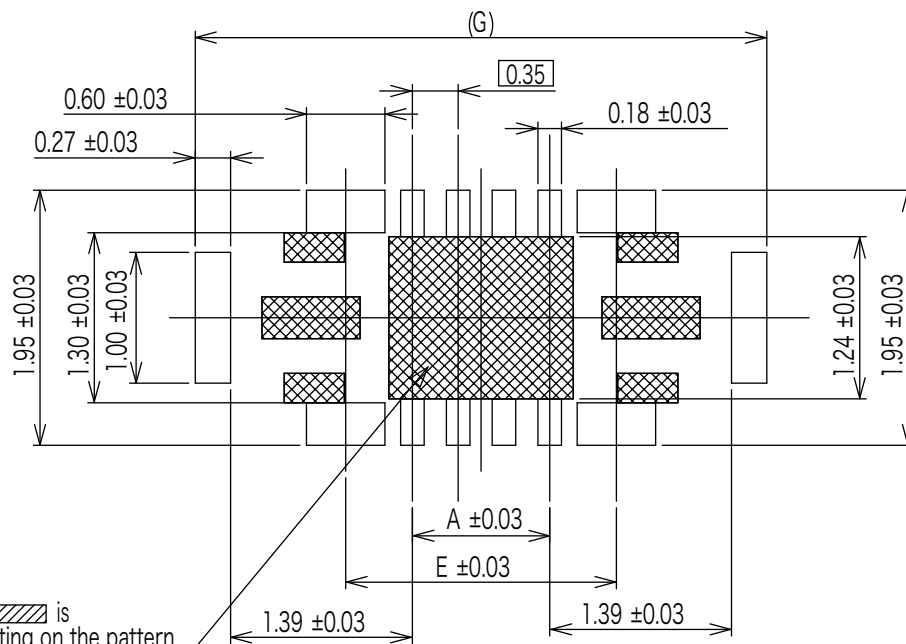


Table-2

Part Number	Number of Contact	A	B	C	D	E	F	G
FB35AT5-RA8-3A	8	1.05	3.15	4.15	2.37	2.07	4.13	4.37

© Specifications and/or dimensions in this catalogue are subject to change without notice.
Your catalogue checking the latest specifications with our drawings would be highly appreciated.

<https://www.connector.fujikura.com>