

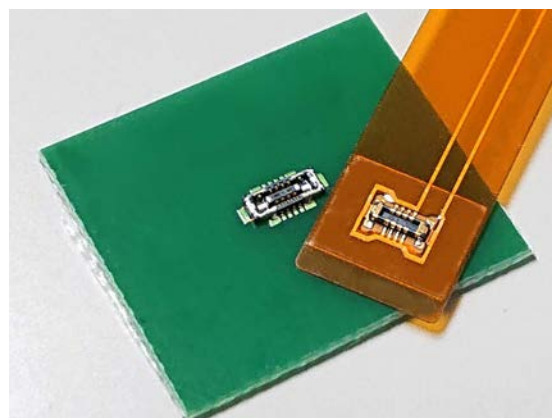
# 0.35mm pitch Board to Board(FPC) Connector

## FB35AT6 Series



### OUTLINE

FB35AT6 is a 0.35mm pitch board to board(FPC) connector with a stacking height of 0.6mm. Space-saving design with a depth of 1.65mm.



### FEATURE

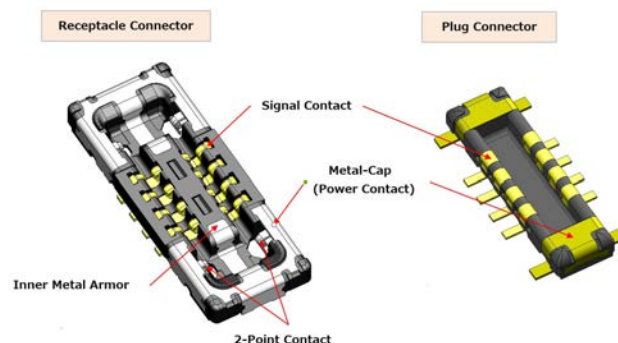
- Pitch 0.35mm, Width 1.65mm, Stacking height 0.6mm
- Number of Contact : 6, 8, 10, 18
- Metal-cap structure prevents from the damage by mis-alignment mating.
- Inner metal armor structure further increases strength
- The power contacts serve with up to 3A current available, which allows for more efficient use of the available connection contacts.
- High reliability with two point contact structure.
- Good click feel when connector is mated.

### APPLICATIONS

Smartphone, Smartwatch, other compact portable devices

### SPECIFICATIONS

Rated Voltage	30V AC(r.m.s.) / 30V DC
Rated Current	0.4A Signal Contact 3.0A Power Contact
Insulation Resistance	100 MΩ min. at 200 V DC
Dielectric Withstand Voltage	AC 200 V (r.m.s.) / 1 minute
Contact Resistance	30 m Ω max. Signal Contact 20 m Ω max. Power Contact
Operating Temperature	-40°C ~ +85°C



### MATERIAL / FINISH



Item	Material / Finish
Signal Contact	Copper Alloy / Au over Ni Plating
Housing	LCP Resin (UL94V-0) / Black
Power Contact	Copper Alloy / Au over Ni Plating

© Specifications and/or dimensions in this catalogue are subject to change without notice.  
Your catalogue checking the latest specifications with our drawings would be highly appreciated.

# ▶ 0.35mm pitch Board to Board(FPC) Connector

## Plug Connector

### FB35AT 6 - PA18-3A

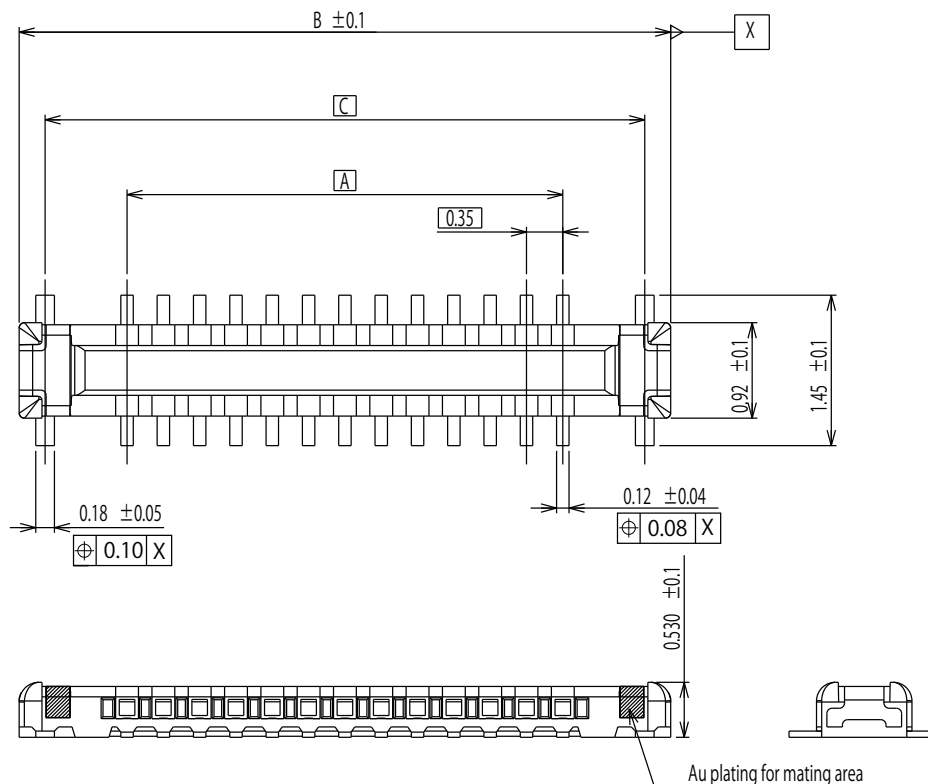
Series Name  
FB35AT6 : 0.35mm pitch, 1.65mm  
depth Board to Board  
Connector

Mating Height  
6 : 0.6mm height

Contact Plating  
3 : Au(Flash) over Ni plating

Number of Contact  
See Table-1

Mating Style  
P : Plug



GENERAL TOLERANCE	
X < 5	±0.15
5 ≤ X < 15	±0.25
15 ≤ X	±0.40
ANGLE	±3°

Table-1 ※ Regarding the number of contact, please contact our sales.

Part Number	Number of Contact	A	B	C
FB35AT6-PA6-3A	6	0.70	2.78	2.28
FB35AT6-PA8-3A	8	1.05	3.13	2.63
FB35AT6-PA10-3A	10	1.40	3.48	2.98
FB35AT6-PA18-3A	18	2.80	4.88	4.38

# ▶ 0.35mm pitch Board to Board(FPC) Connector

## Receptacle Connector

### FB35AT 6 - RA18-3A

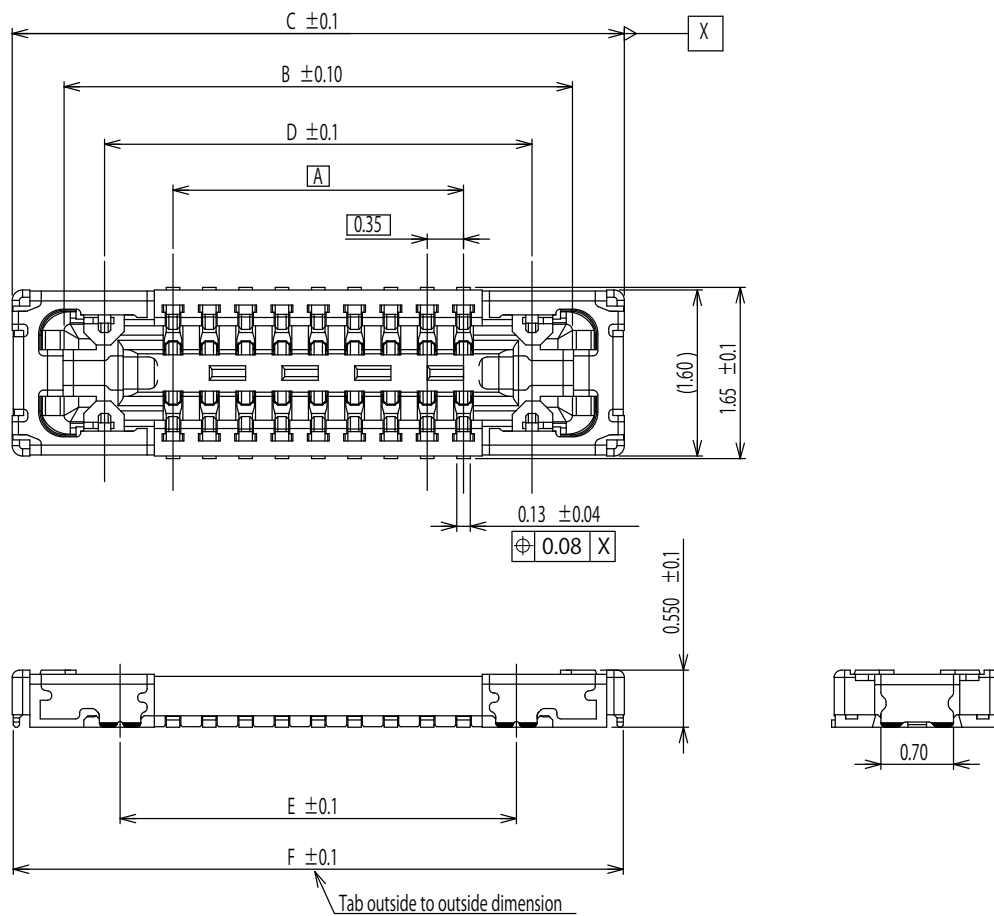
Series Name  
FB35AT6 : 0.35mm pitch, 1.65mm  
depth Board to Board  
Connector

Mating Height  
6 : 0.6mm height

Contact Plating  
3 : Au(Flash) over Ni plating

Number of Contact  
See Table-1

Mating Style  
R : Receptacle



GENERAL TOLERANCE	
X < 5	±0.15
5 ≤ X < 15	±0.25
15 ≤ X	±0.40
ANGLE	±3°

Table-2 ※ Regarding the number of contact, please contact our sales.

Part Number	Number of Contact	A	B	C	D	E	F	G
FB35AT6-RA6-3A	6	0.70	2.80	3.80	2.02	1.72	3.78	4.02
FB35AT6-RA8-3A	8	1.05	3.15	4.15	2.37	2.07	4.13	4.37
FB35AT6-RA10-3A	10	1.40	3.50	4.50	2.72	2.42	4.48	4.72
FB35AT6-RA18-3A	18	2.80	4.90	5.90	4.12	3.82	5.88	6.12

© Specifications and/or dimensions in this catalogue are subject to change without notice.  
Your catalogue checking the latest specifications with our drawings would be highly appreciated.

<https://www.connector.fujikura.com>

