

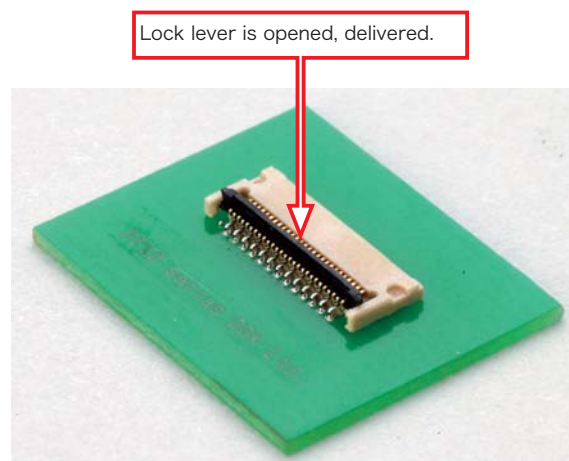
## ▶ Connector Operation and Note

### 1. Lock Lever

Connectors are delivered with lock lever opened.  
You need not operate the lock lever before inserting FPC.  
(Refer to Pic. ①)

#### Caution

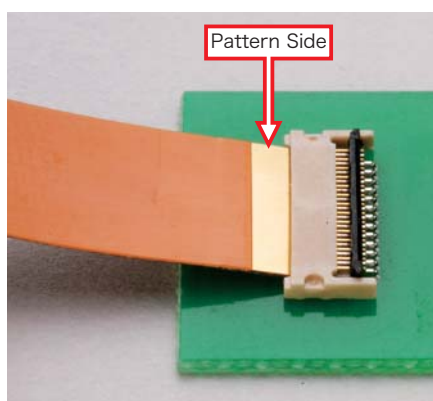
Please do not close a lock lever without inserting FPC.  
Otherwise, contact gap will become narrow and  
FPC insertion force will be higher.



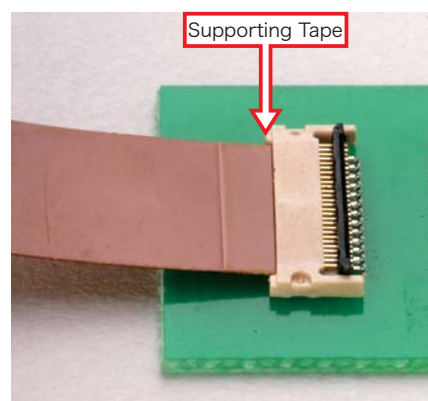
Pic. ①

### 2. Insert FPC

- When using the upper contact, please insert FPC pattern side up. When using the lower contact, please insert FPC supporting tape side up. ( Upper Contact : Pic. ② , Lower Contact : Pic. ③ )
- Please insert FPC straight in the connector housing.
- Contacts have a semi-retaining mechanism. You need some insertion force when inserting FPC.
- Please confirm FPC is inserted into the end of mating part fully.



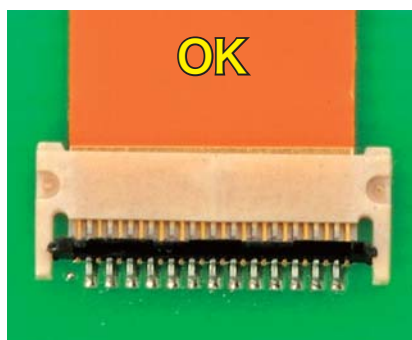
Pic. ② Upper Contact



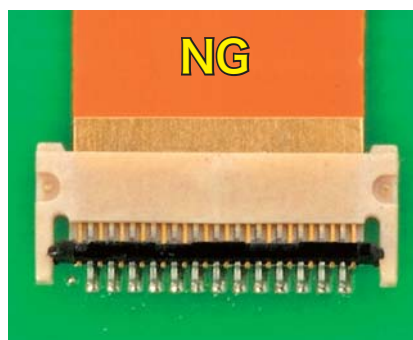
Pic. ③ Lower Contact

### 3-1. FPC Correct Connection(Upper Contact)

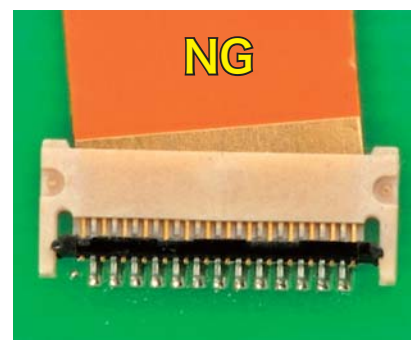
Please confirm FPC pattern line is parallel to the connector housing.  
It makes sure collect insertion to prevent short and diagonal insertion problem. ( Pic. ④ , Pic. ⑤ , Pic. ⑥ )



Pic. ④ Correct Insertion



Pic. ⑤ Short Insertion

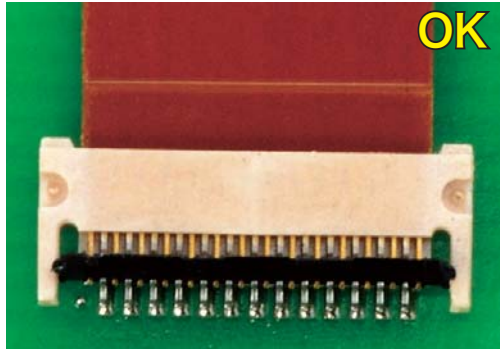


Pic. ⑥ Diagonal Insertion

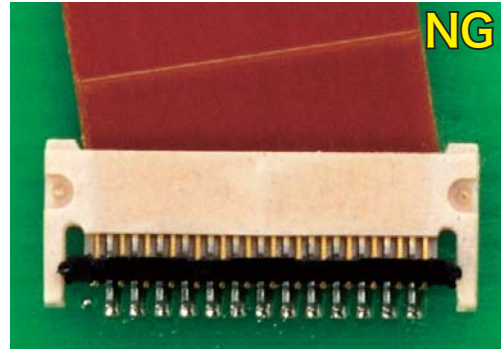
## ▶ Method of Operating and Note

### 3-2. FPC Correct Insertion(Lower Contact)

Please confirm FPC supporting tape line is parallel to the connector housing. ※ (Excluding FF18 and FF20 Series)  
 It makes sure collect insertion to prevent slanted insertion problem.  
 Also you can confirm the short insertion if making the same line like as FPC pattern line on the supporting tape face.



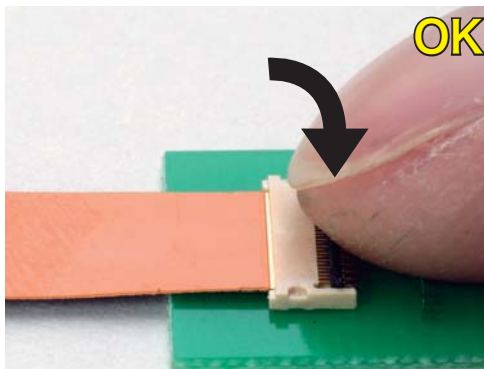
Pic. ⑦ Correct Insertion



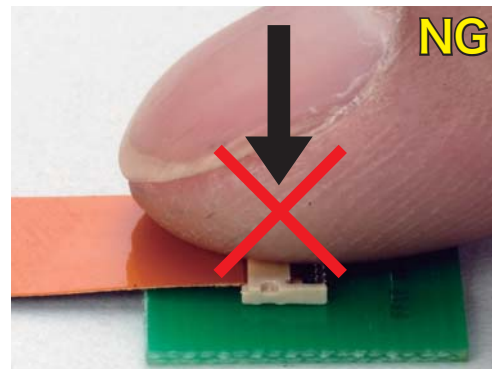
Pic. ⑧ Diagonal Insertion

### 4. Lock Lever

Please rotate down the lock lever. (Pic. ⑨)  
 Please be careful to not press with excessive force on the housing. (Pic. ⑩)



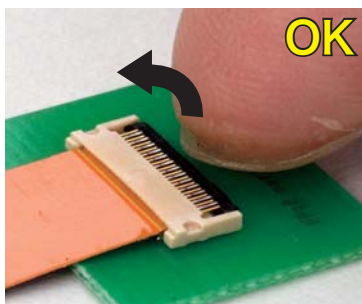
Pic. ⑨



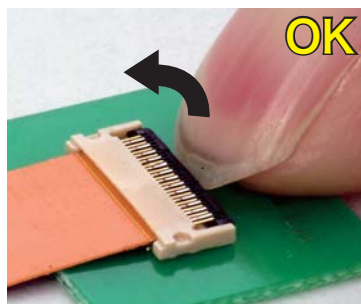
Pic. ⑩

### 5. Unlock Lever and Removing FPC

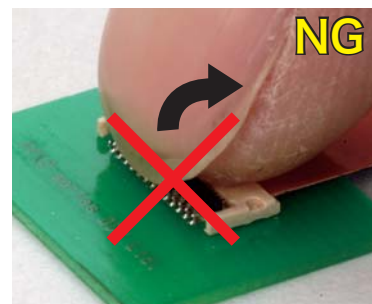
Please flip and lift up the lock lever in arrow direction and withdraw FPC carefully. (Pic. ⑪, ⑫)  
 Please do not lift up with excessive force on the housing. (Pic. ⑬)



Pic. ⑪



Pic. ⑫



Pic. ⑬